



US 20050140281A1

(19) **United States**(12) **Patent Application Publication**
Park(10) **Pub. No.: US 2005/0140281 A1**(43) **Pub. Date: Jun. 30, 2005**(54) **ORGANIC ELECTROLUMINESCENT
DISPLAY DEVICE AND METHOD OF
FABRICATING THE SAME****Publication Classification**(51) **Int. Cl.⁷ H05B 33/00; H05B 33/08**(52) **U.S. Cl. 313/505; 313/506; 313/509**(75) **Inventor: Jae-Yong Park, Kyounggi-do (KR)**(57) **ABSTRACT**

Correspondence Address:

**MORGAN LEWIS & BOCKIUS LLP
1111 PENNSYLVANIA AVENUE NW
WASHINGTON, DC 20004 (US)**(73) **Assignee: LG.Philips LCD Co., Ltd.**(21) **Appl. No.: 10/825,247**(22) **Filed: Apr. 16, 2004**(30) **Foreign Application Priority Data**

Dec. 29, 2003 (KR) 2003-99241

An organic electroluminescent (EL) display device and methodology of fabricating the same includes a first array substrate having an anode electrode, a cathode electrode and an organic layer between the anode electrode and the cathode electrode; a second array substrate having at least one driving thin film transistor formed thereon, the at least one driving thin film transistor to supply a driving signal to either one of the anode electrode and the cathode electrode; a first spacer made of conductive material to supply the driving signal to either one of the anode electrode and the cathode electrode, the first spacer being formed between the first and the second array substrates; and a second spacer made of an adhesive material to fix together the first and the second array substrates, the second spacer being formed between the first and the second array substrates.

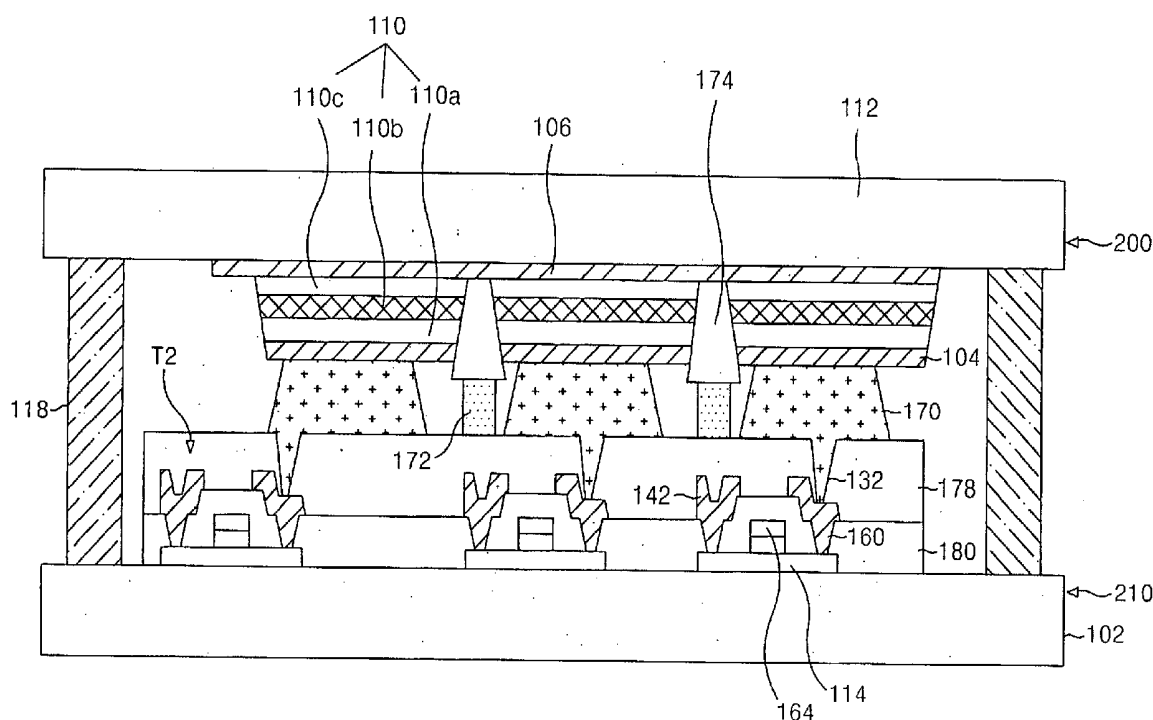


FIG. 1

RELATED ART

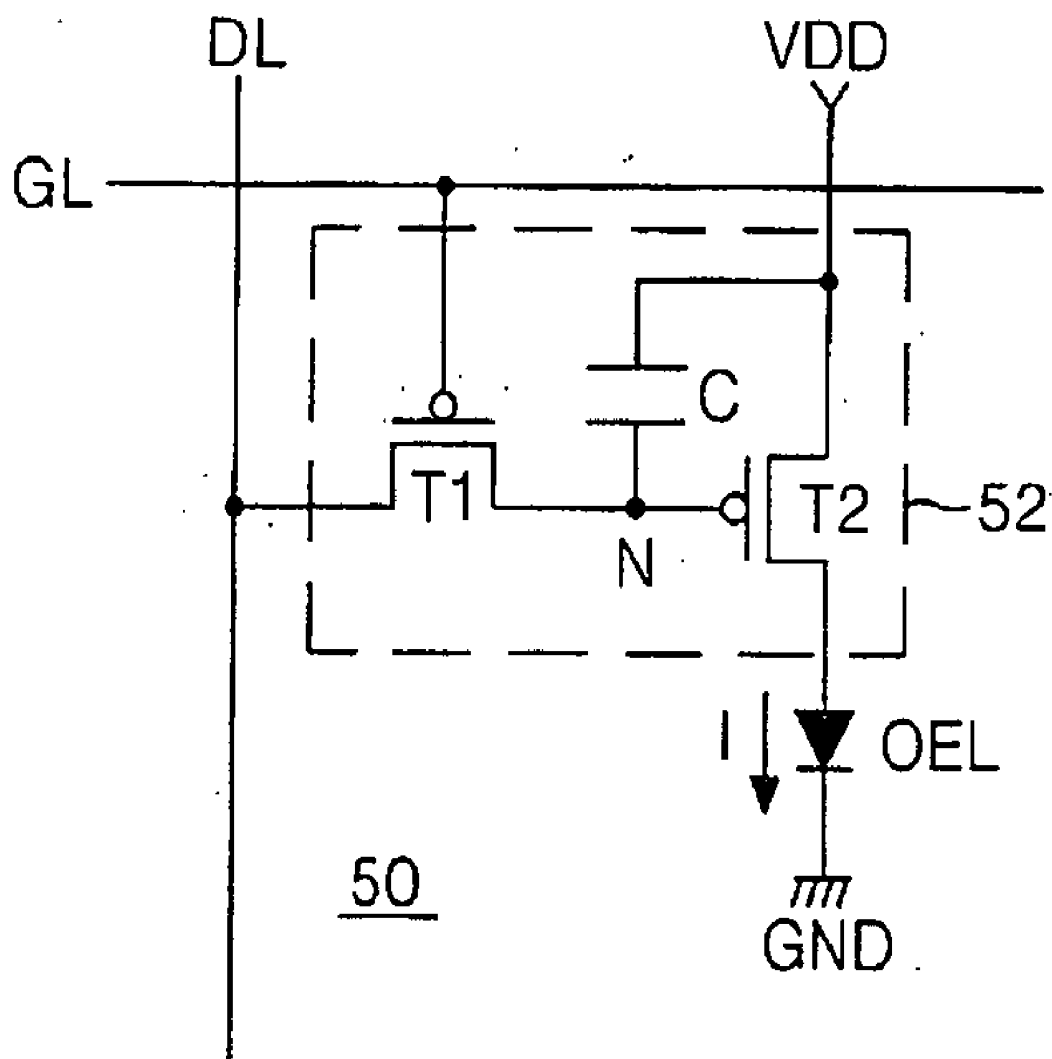


FIG. 2
RELATED ART

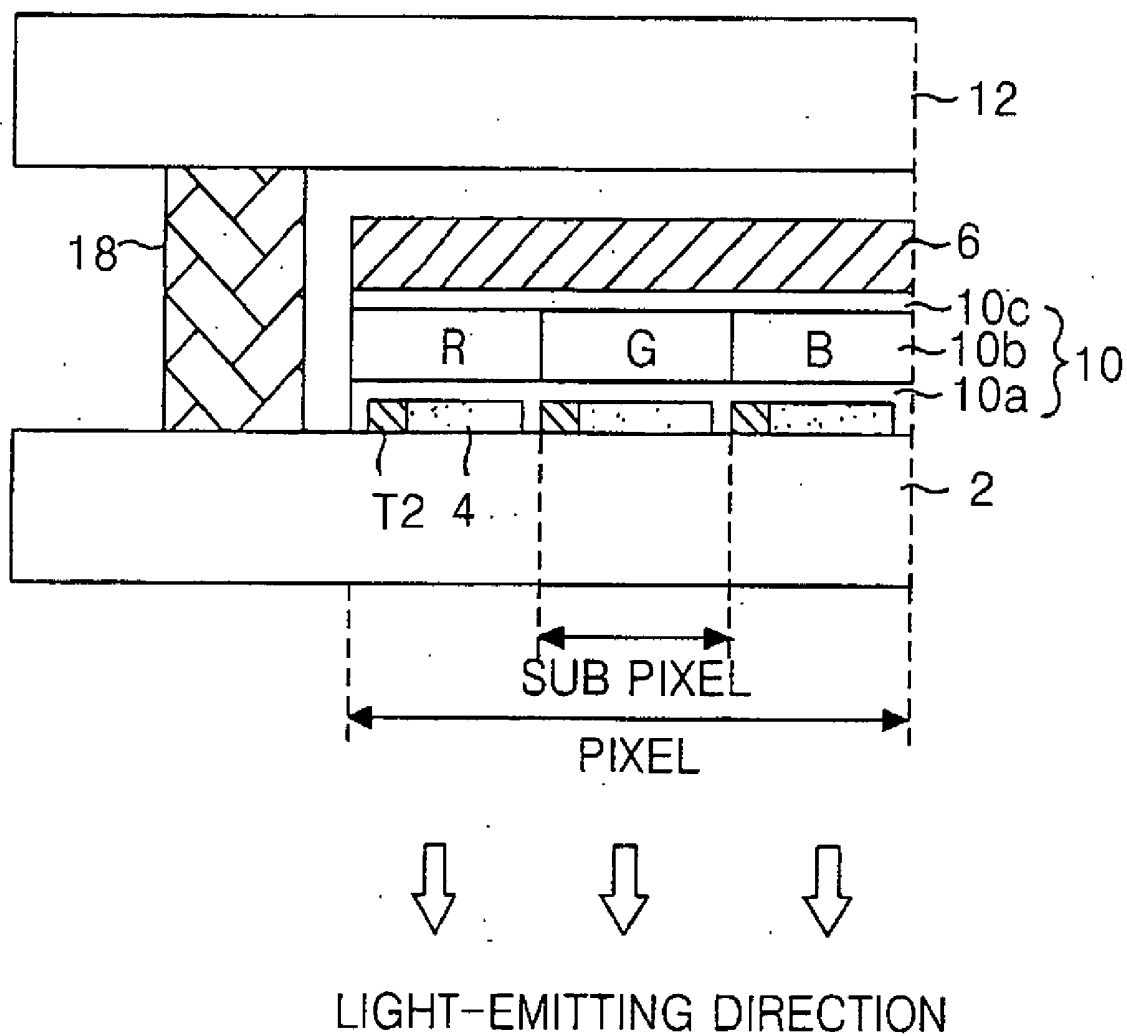


FIG. 3

RELATED ART

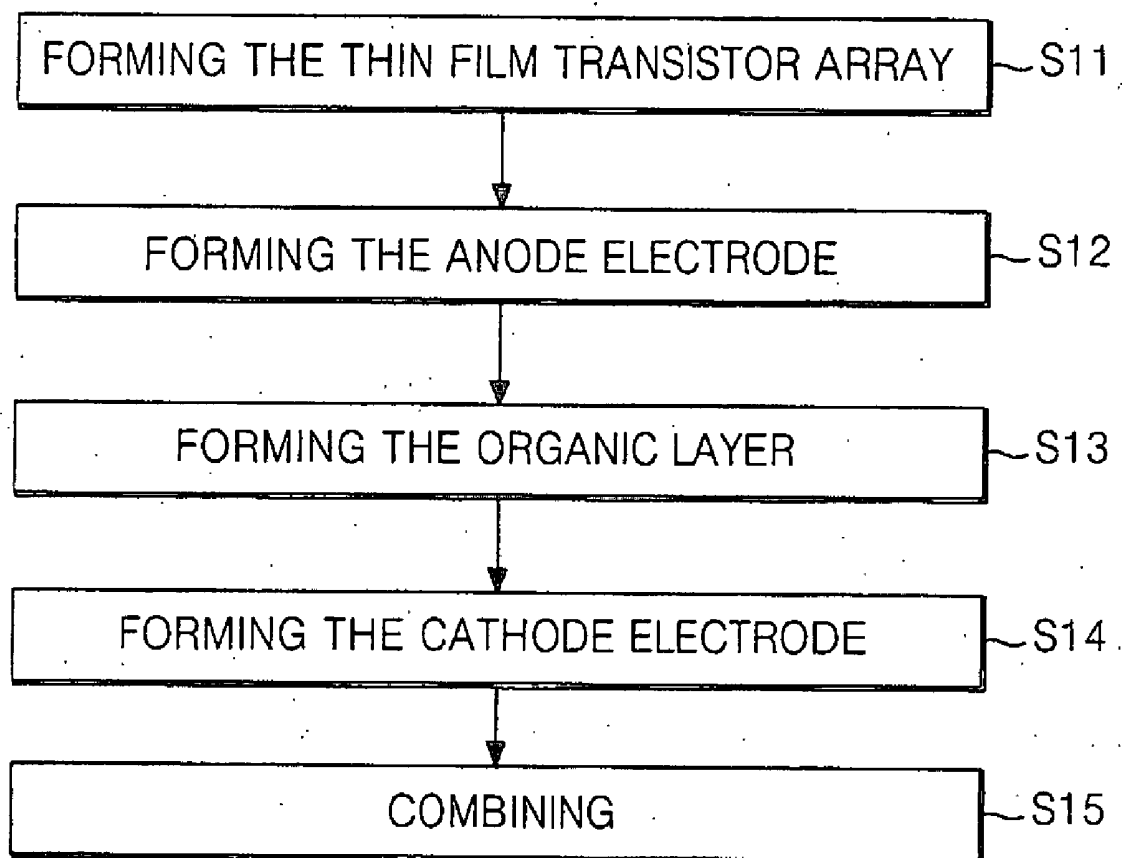


FIG. 4

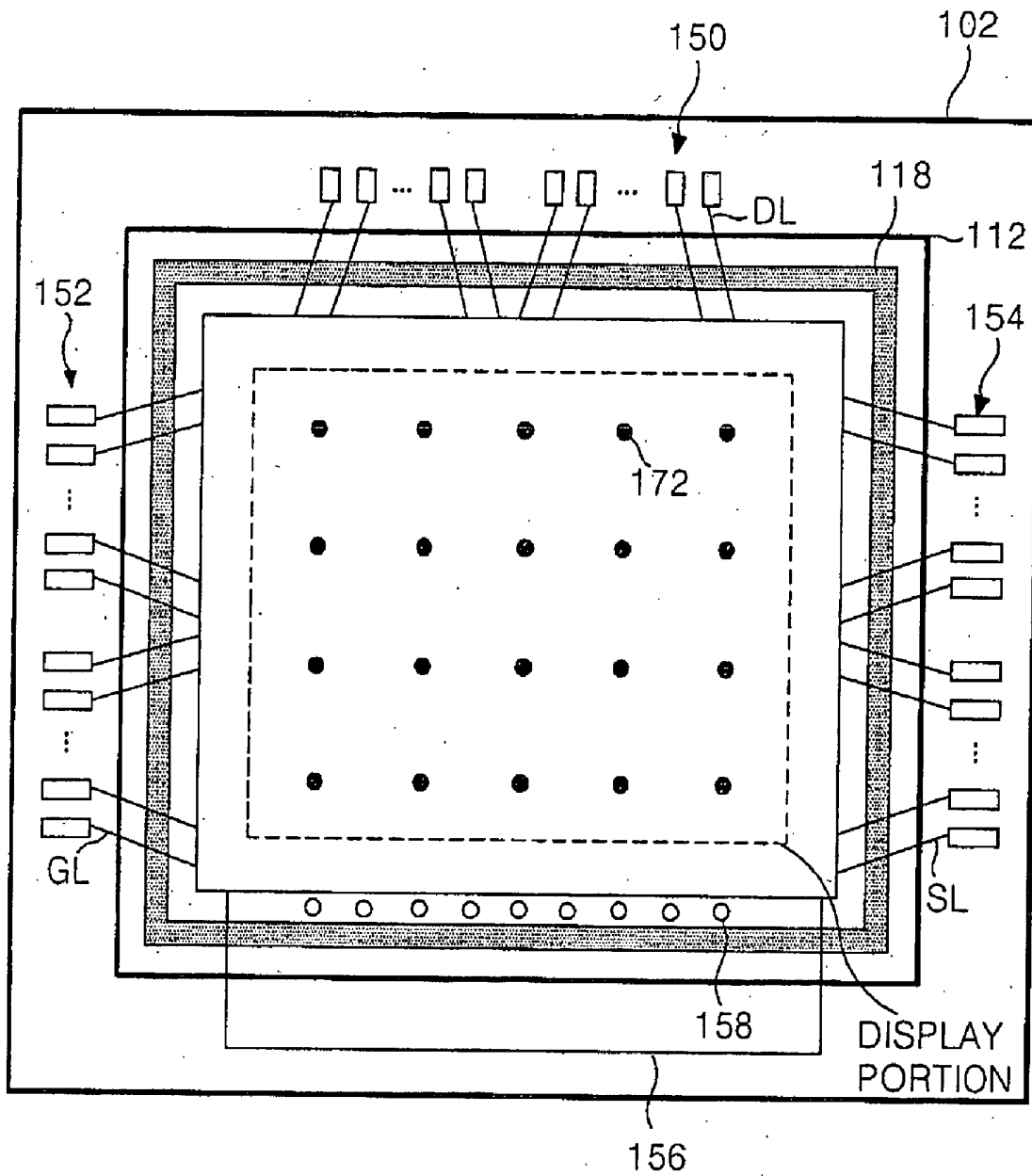


FIG. 6

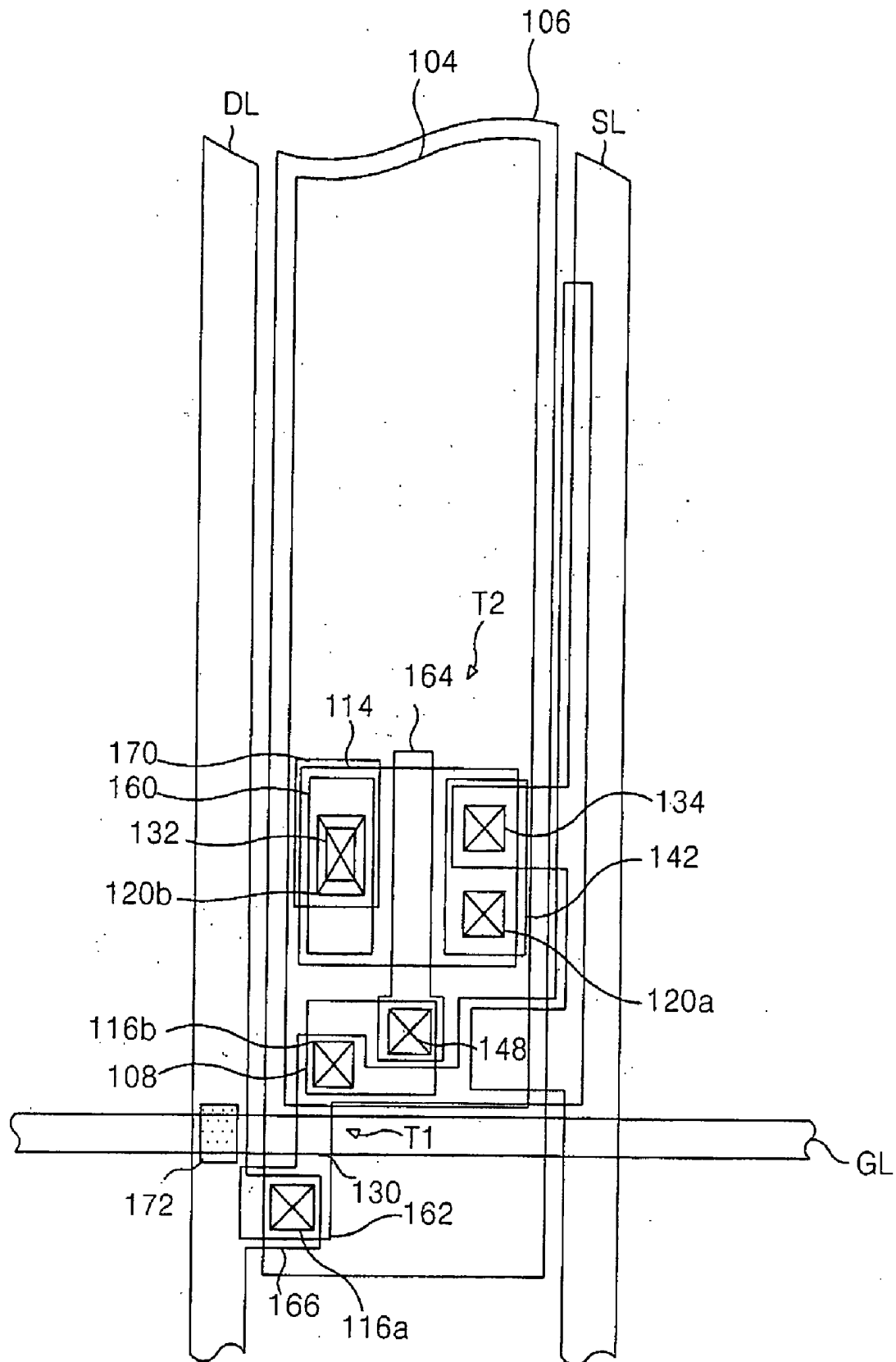
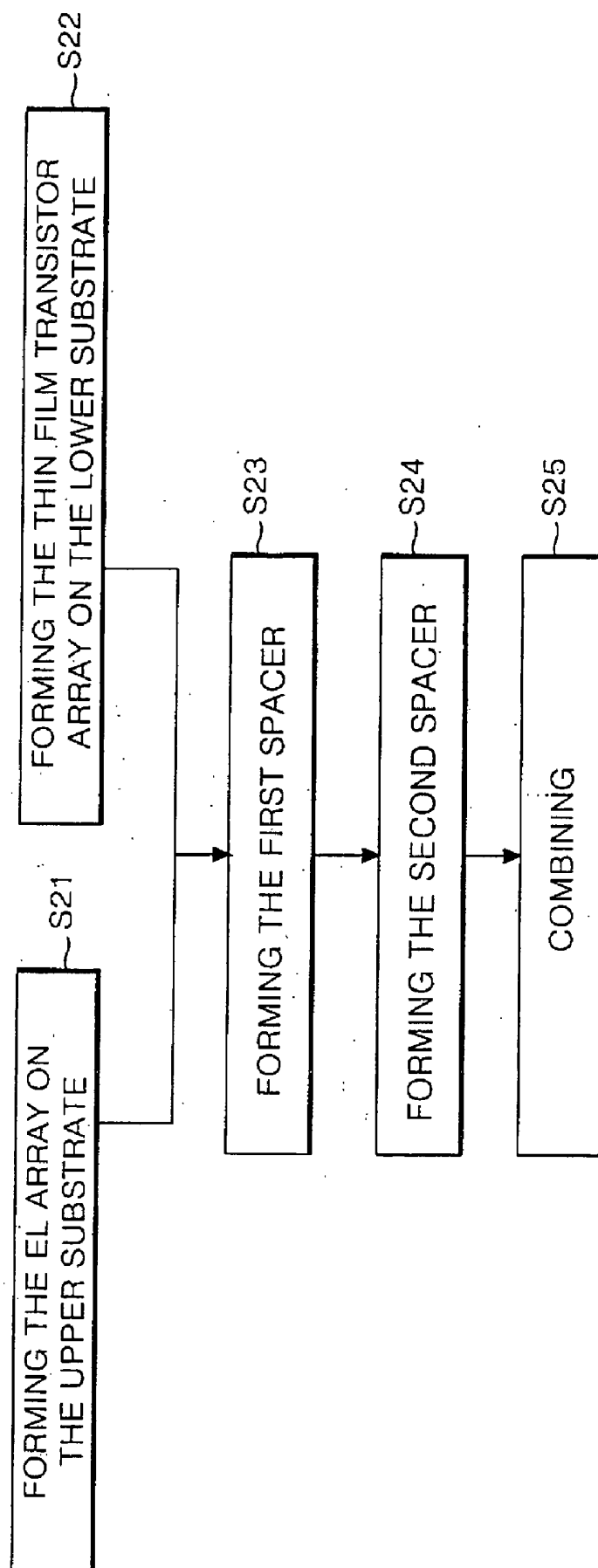


FIG. 7



ORGANIC ELECTROLUMINESCENT DISPLAY DEVICE AND METHOD OF FABRICATING THE SAME

[0001] The present invention claims the benefit of the Korean Patent Application No. P2003-99241, filed in Korea on Dec. 29, 2003, which is hereby incorporated by reference.

BACKGROUND OF THE INVENTION

[0002] 1. Field of the Invention

[0003] The present invention relates to an organic electroluminescent device, and more particularly, to an organic electroluminescent display device that includes first and second array substrates and at least one spacer, and a method of fabricating the same.

[0004] 2. Discussion of the Related Art

[0005] In recent times, various flat panel display technologies have been developed resulting in the display device having an overall reduced bulk and weight. Display devices utilizing these flat panel display technologies are free from the disadvantages of prior technologies that utilized a typically bulky and heavy cathode ray tube (CRT) to generate the display. Such flat panel display technologies can be of various types, including a liquid crystal display (LCD), a field emission display (FED), a plasma display panel (PDP), and an electroluminescent (EL) display device.

[0006] Among these various flat panel display types, the structure and fabrication process of the PDP is relatively simple, resulting in the PDP display type being particularly advantageous for light-weight, large-sized applications. However, the light emission efficiency and brightness level of such PDPs are relatively low. At the same time, such PDP devices typically consume a large amount of power.

[0007] In comparison, LCD technology, which utilizes a thin film transistor (TFT) as a switching device, is not preferred for large-sized applications because it is fabricated by a relatively-complex semiconductor process. Nevertheless, the demand for LCD technology continues to increase for relatively small display applications, such as in notebook computer displays. However, particular disadvantages of LCD technology include its high power consumption, its difficulty to be made large-sized, and its inclusion of a backlight unit as a light source. Further, LCD arrangements result in a high amount of optical loss that results from its utilization of optical devices such as a polarizing filter, a prism sheet and a diffusion panel. Moreover, the viewing angle of such LCD arrangements is narrow, as compared to other display types.

[0008] As compared with LCD technology, EL display devices are generally classified into two types: inorganic EL devices and organic EL devices, based on the material making up its light-emission layer. A spontaneous light-emitting EL display device has an advantage over other flat panel display types in that it has a fast response speed, a high light-emission efficiency, and a superior brightness level. Moreover, EL display devices are advantageous in that they have a wide viewing angle.

[0009] The organic EL display device, as shown in FIG. 1, includes sub pixels 50 wherein each sub pixel is arranged at the intersection area of a gate line GL and a data line DL.

Each sub pixel 50 receives a data signal from the data line DL and generates light corresponding to the data signal when a gate pulse is applied to the gate line GL.

[0010] In this regard, the sub pixel 50 includes an EL cell OEL having a cathode connected to a ground voltage source GND. The sub pixel 50 also includes a cell driver 52 connected to the gate line GL, the data line DL and a supply voltage source VDD. The cell driver 52 is also connected to the anode of the EL cell OEL for driving the EL cell OEL. The cell driver 52 includes a switching thin film transistor T1, a driving thin film transistor T2, and a capacitor C.

[0011] When a scan pulse is applied to the gate line GL, the switching thin film transistor T1 is turned-on and it supplies a data signal from the data line DL to a node N. The data signal supplied to the node N is charged in the capacitor C. Simultaneously the data signal is applied to a gate terminal of the driving thin film transistor T2. The driving thin film transistor T2 controls the amount of current I applied to the EL cell OEL from the supply voltage source VDD in response to the data signal supplied to the gate terminal to thereby control the amount of light emission of the EL cell OEL. As a result, even though the switching thin film transistor T1 may be turned off, since the data signal is discharged from the capacitor C, the driving thin film transistor T2 continues to supply current I from the supply voltage source VDD to the EL cell OEL until the data signal of the next frame is applied. This results in the EL cell OEL light emission being sustained.

[0012] FIG. 2 is a sectional view representing a pixel of the organic EL as shown in FIG. 1 in which the pixel includes red, green and blue sub pixels to form one pixel region. The EL display, as shown in FIG. 2, includes a substrate 2 and a packaging plate 12, which are combined by a sealant 18. A plurality of EL cells are formed within a display region arranged by the sealant 18 on the substrate 2. Each of these EL cells includes an organic layer formed between an anode electrode 4 and a cathode electrode 6, which cross each other and are insulated from each other.

[0013] Each anode electrode 4 is separated by a predetermined distance from other anode electrodes on the substrate 2. A first driving signal is supplied through the driving thin film transistor T2 to the anode electrode 4 to emit holes from the anode electrode 4.

[0014] The organic layer 10 includes a hole carrier layer 10a which carries holes emitted from the anode electrode 4 to a light-emitting layer 10b. The light-emitting layer 10b generates visible light by a combination of the holes and electrons emitted from the cathode electrode 6. An electron carrier layer 10c carries the electrons to a light-emitting layer 10b.

[0015] The cathode electrode 6 is separated from other cathode electrodes by a predetermined distance on the organic layer 10 and is formed crossing the anode electrode 4. Furthermore, a second driving signal is supplied to the cathode electrode 6 to emit the electrons.

[0016] The packaging plate 12, made up of a metallic material, includes an oxygen and moisture absorbent material. The packaging plate 12 serves to radiate heat that is generated upon the light-emission of the organic layer 10. The packaging plate 12 also serves to protect the organic layer 10 from external forces, as well as from moisture and oxygen in the atmosphere.

[0017] If a driving signal is applied to the anode electrode 4 and the cathode electrode 6 in the organic EL display device, the electrons and the holes are emitted and then re-combined to generate visible light from the organic layer 10. At this time, the visible light exits to the exterior via the anode electrode 4 and the substrate 2, where it is used to display a picture or image.

[0018] FIG. 3 is a flow diagram representing a manufacturing process of the related art organic EL display device. At step S11, a signal line including a gate line, a data line and a supply line, and a thin film transistor array including a driving thin film transistor and a switching thin film transistor are formed on the substrate. At step S12, an anode electrode is formed to connect to a drain electrode of the driving thin film transistor. At step S13, an organic layer including a hole carrier layer, a light-emitting layer and electron carrier layer is formed on the anode electrode. At step S14, a cathode electrode intersecting with the anode electrode is formed on the organic layer. Then, at step S15, a packaging plate is combined with the substrate by a sealant in order to protect the substrate having the thin film transistor array, the anode electrode, the organic layer and the cathode electrode formed thereon.

[0019] As described above, the related art organic EL display device is made by combining the packaging plate with the substrate having the thin film transistor and the organic light-emitting layer. In such an arrangement, the overall organic EL display device's production yield is determined based on both the production yield of the thin film transistor and the production yield of the organic layer. Particularly, the production yield of the organic EL display device is determined depending on the production yield of the organic layer, which has a high defective rate, especially when compared to the thin film transistor's defective rate. For instance, even though a thin film transistor formed on the substrate has a good quality and acceptable production yield, the overall organic EL display device can be regarded as defective as a result of a poor production yield associated with the organic layer having a thin film of about 1000 Å in thickness. Therefore, this results in a problem with such related art arrangements in that the costs of raw materials and other expenses associated with manufacturing a thin film transistor of good quality are sacrificed, while the overall device production yield is lowered.

[0020] Moreover, the related art organic EL display device is a lower portion light-emitting type in which the visible light rays exit to the exterior via the rear surface of the substrate. While this arrangement of the related art organic EL display device results in a high stability and a desirable degree of freedom of processing by the packaging plate, it also suffers from a particular difficulty to adapt to high-resolution applications.

SUMMARY OF THE INVENTION

[0021] Accordingly, the present invention is directed to an organic electroluminescent device and a method of fabricating the same that substantially obviate one or more of the problems due to limitations and disadvantages of the related art.

[0022] An object of the present invention to provide an organic electroluminescent (EL) display device having an

improved production yield and a high aperture ratio, and a method of fabricating the same.

[0023] Additional features and advantages of the invention will be set forth in the description which follows, and in part will be apparent from the description, or may be learned by practice of the invention. The objectives and other advantages of the invention will be realized and attained by the structure particularly pointed out in the written description and claims hereof as well as the appended drawings.

[0024] To achieve these and other advantages and in accordance with the purpose of the present invention, as embodied and broadly described, an organic electroluminescent (EL) device includes a first array substrate having an anode electrode, a cathode electrode and an organic layer between the anode electrode and the cathode electrode; a second array substrate having at least one driving thin film transistor formed thereon, the at least one driving thin film transistor to supply a driving signal to either one of the anode electrode and the cathode electrode; a first spacer made of conductive material to supply the driving signal to either one of the anode electrode and the cathode electrode, the first spacer being formed between the first and the second array substrates; and a second spacer made of an adhesive material to fix together the first and the second array substrates, the second spacer being formed between the first and the second array substrates.

[0025] In another aspect, a method of fabricating an organic electroluminescent (EL) display device includes forming a first array substrate including an anode electrode, a cathode electrode and an organic layer between the anode electrode and the cathode electrode; forming a second array substrate including at least one driving thin film transistor formed thereon to supply a driving signal to either one of the anode electrode and the cathode electrode; forming a first spacer of conductive material between the first and the second array substrates to supply the driving signal to either one of the anode electrode and the cathode electrode; and forming a second spacer of an adhesive material between the first and the second array substrates to fix together the first and second array substrates.

[0026] In another aspect, an organic electroluminescent (EL) display device includes a first array substrate having an anode electrode, a cathode electrode and an organic layer between the anode electrode and the cathode electrode; a second array substrate having at least one driving thin film transistor formed thereon, the at least one driving thin film transistor to supply a driving signal to either one of the anode electrode and the cathode electrode via a conductor; and a spacer made of an electrically insulating material to fix together the first and the second array substrates, the spacer being formed between the first and the second array substrates.

[0027] It is to be understood that both the foregoing general description and the following detailed description are exemplary and explanatory and are intended to provide further explanation of the invention as claimed.

BRIEF DESCRIPTION OF THE DRAWINGS

[0028] The accompanying drawings, which are included to provide a further understanding of the invention and are

incorporated in and constitute a part of this specification, illustrate embodiments of the invention and together with the description serve to explain the principles of the invention.

[0029] **FIG. 1** is a circuit diagram of an organic electroluminescent device according to the related art.

[0030] **FIG. 2** is a schematic cross-sectional view of the related art organic electroluminescent device shown in **FIG. 1**.

[0031] **FIG. 3** is a flow diagram representing the method of fabricating the related art organic electroluminescent device shown in **FIG. 2**.

[0032] **FIG. 4** is a schematic plane view showing an organic electroluminescent device according to an embodiment of the present invention.

[0033] **FIGS. 5A and 5B** are schematic cross-sectional views showing the organic electroluminescent device of **FIG. 4**.

[0034] **FIG. 6** is a schematic plane view showing a sub pixel of the organic electroluminescent device of **FIG. 4**.

[0035] **FIG. 7** is a flow diagram representing the method of fabricating the organic electroluminescent device according to an embodiment of the present invention.

DETAILED DESCRIPTION OF THE EMBODIMENTS

[0036] Reference will now be made in detail to the preferred embodiments of the present invention, examples of which are illustrated in the accompanying drawings.

[0037] **FIG. 4** is a schematic plane view showing an organic electroluminescent device according to an embodiment of the present invention. **FIGS. 5A and 5B** are schematic cross-sectional views showing the organic electroluminescent device of **FIG. 4**.

[0038] The organic EL device shown in **FIGS. 4 and 5** includes an upper array substrate **200** having a plurality of EL cells, a lower array substrate **210** having a thin film transistor array for driving the EL cells, a plurality of first spacers **170** for connecting the EL cells and the thin film transistor array, and a plurality of second spacers **172** formed between the first spacers **170**.

[0039] The upper array substrate **200** includes an anode electrode **104** and a cathode electrode **106** isolated from each other and crossing each other on the upper substrate **112**, a barrier rib **174** formed between the anode electrode **104** and the cathode electrode **106**, and an organic layer **110** located in between the anode electrode **104** and the cathode electrode **106**. It is understood that the anode electrode **104** and the cathode electrode **106** can be interchanged.

[0040] Each cathode electrode **106** is separated from adjacent cathode electrodes by a predetermined distance on the upper substrate **112**. The cathode electrode **106** is supplied with a first driving signal used to emit electrons from the cathode electrode **106**.

[0041] The anode electrode **104** is separated from adjacent anode electrodes by a predetermined distance and crosses with the cathode electrode **106** on the organic layer **110**. The anode electrode **104** is supplied with a second driving signal

used to emit holes from the anode electrode **104** via the driving thin film transistor **T2** and the first spacer **170**.

[0042] The barrier rib **174** is formed to define the EL cell so that the cathode electrode **106** of the adjacent EL cell is separated from the organic layer **110**.

[0043] The organic layer **110** includes a hole carrier layer **110a** for carrying holes, a light-emitting layer **110b** for generating visible light by a combination of the holes and electrons emitted from the cathode electrode **106**, and an electron carrier layer **110c** for carrying the electrons to a light-emitting layer **110b**, which are sequentially accumulated on the anode electrode **104**.

[0044] The lower array substrate **210** includes a display portion having a thin film transistor formed thereon and a pad portion located outside of the display portion.

[0045] The pad portion includes a gate pad **152** connected with a gate line **GL**, a data pad **150** connected with a data line **DL**, a supply pad **154** connected with a supply line **SL** and a cathode pad **156** connected to the cathode electrode **106**.

[0046] The cathode pad **156** supplies a driving signal to the cathode electrode **106** via a conductive dot **158** located at an inside of a seal line **118**. The conductive dot **158** is made of metallic material identical to the first spacer **170** or a separate conductive metal.

[0047] The display portion, as shown in **FIG. 6**, includes a driving thin film transistor **T2** formed at an intersection of the supply line **SL** connected to the gate line **GL** and the supply voltage source. The display portion also includes a switching thin film transistor **T1** connected to the driving thin film transistor **T2**.

[0048] The switching thin film transistor **T1** includes a gate electrode **130** included in the gate line **GL**, a source electrode **166** connected with the data line **DL**, a drain electrode **108** connected to a gate electrode **164** of the driving thin film transistor **T2** via a contact hole **148**, and an active layer **162** for forming a conductive channel between the source electrode **166** and the drain electrode **108**. The active layer **162** is connected to the source electrode **166** and the drain electrode **108** through first and second switching contact holes **116a** and **116b**.

[0049] The driving thin film transistor **T2** includes a gate electrode **164** connected to the drain electrode **108** of the switching thin film transistor **T1**, a source electrode **142** connected to the supply line **SL** via the supply contact hole **134**, a drain electrode **160** connected to the first spacer **170** via a pixel contact hole **132**, and an active layer **114** for forming a conductive channel between the source electrode **142** and the drain electrode **160**. The active layer **114** is connected to the source electrode **142** and the drain electrode **160** through first and second driving contact holes **120a** and **120b**. The driving thin film transistor **T2** selectively supplies a supply voltage signal **VDD** from the supply line **SL** to the anode electrode **104** through the first spacer **170** in response to the signal from the gate line **GL**.

[0050] The first spacer **170**, as shown in **FIGS. 5A and 5B**, electrically connects the anode electrode **104** to the drain electrode **160** of the driving thin film transistor **T2**. The drain electrode **160** is exposed through the pixel contact hole **132**

which penetrates a passivation film 178. The first spacer 170 is made of a metal having a low resistivity value.

[0051] A second spacer 172 is formed for every EL cell and prevents the substrate from bending upon the formation of a large-sized EL device on the substrate to thereby provide a uniform cell gap across the entire area of the substrate. Moreover, in an arrangement where the first spacer 170 is connected to the drain electrode 160 of the driving thin film transistor T2 and the anode electrode 104 by a vacuum process, for example, the second spacer 172 serves to prevent the separation and disconnection of the anode electrode 104 from the drain electrode 160 due to external forces.

[0052] The second spacer 172 is made of a material, for example, that is identical to the material making up a seal line 118. For example, the second spacer can be formed of an electrically insulating material. The second spacer 172 is formed so as to overlap with at least one of the barrier rib 174, the gate line GL, the data line DL, the supply line SL, the switching thin film transistor T1, and the driving thin film transistor T2. However, the second spacer 172 does not overlap with the first spacer 170.

[0053] For instance, as shown in FIG. 5A, the second spacer 172 is formed so as to overlap with the barrier rib 174 and to be separate from the anode electrode 104. Alternately, as shown in FIG. 5B, the second spacer 172 is formed so as to be in contact with the anode electrode 104 and so as to overlap with the pixel area where the gate line GL and the data line DL intersect with one another.

[0054] As set forth above, according to the organic display device of the present invention, the upper array substrate and the lower array substrate are fixed in place by the second spacer. Accordingly, it is possible to prevent defects that would otherwise result from the disconnection of the first spacer from the anode electrode. Because such a disconnection is prevented, the overall impact resistance vibration resistance of the display device arrangement of the instant application is enhanced.

[0055] FIG. 7 is a flow diagram representing the method of fabricating the organic electroluminescent device according to an embodiment of the present invention.

[0056] Steps S21 and S22 of FIG. 7 designate steps in which an EL array is formed on the upper substrate and a thin film transistor array is formed on the lower substrate, respectively. More specifically, a cathode electrode, an organic layer formed on the cathode electrode, a barrier rib separating the cathode electrode and the organic layer on a pixel basis, and a EL array having the anode electrode crossing the cathode electrode are formed on the upper substrate.

[0057] Formed on the lower substrate are a gate line, a data line crossing with the gate line, a supply line formed in parallel with the data line, a switching thin film transistor located at the intersection of the gate line and data line, a driving thin film transistor connected with the switching thin film transistor. The driving thin film transistor is connected to the supply line. A driving thin film transistor array is provided having a passivation film which protects the switching thin film transistor and the driving thin film transistor and having a pixel contact hole to expose the drain electrode of the driving thin film transistor.

[0058] At step S23, a first spacer is then formed on either one of the upper substrate and the lower substrate. Here, the drain electrode of the driving thin film transistor, which is exposed through the pixel contact hole, is connected to the anode electrode via the first spacer.

[0059] Thereafter, at step S24, a second spacer is formed on one of the upper substrate and the lower substrate. Here, the second spacer overlaps with at least one of the gate line, the data line, the supply line, the switching thin film transistor, the driving thin film transistor and the barrier rib using an inkjet or screen printing method, for example.

[0060] At step S25, a seal line is then formed along the outer portion of the display portion using a dispenser or screen-printing method, for example, in order to combine the upper substrate and the lower substrate. After combining the upper substrate and the lower substrate using the seal line, the seal line is hardened by ultraviolet rays, for example.

[0061] As mentioned above, in the organic electroluminescent and fabricating method thereof according to embodiments of the present invention, the EL array formed on the upper substrate and the driving thin film transistor array are electrically connected through the first spacer made of conductive material. Moreover, the upper substrate and lower substrate are fixed in place by the second spacer made of an adhesive material. Accordingly, such an arrangement is able to prevent disconnection of the anode electrode from the first spacer from occurring due to external impacts.

[0062] Further, according to embodiments of the present invention, because the organic electroluminescent display device is an upper portion light-emitting type, in which the light generated on the light-emitting layer is emitted to the exterior via the upper substrate, it is possible to guarantee a desirable aperture ratio irrespective of the configuration of the thin film transistor.

[0063] Moreover, according to embodiments of the present invention, since the organic EL cell, including the organic layer, is formed separately from the thin film transistor array, and is thus not formed on the thin film transistor array, it is possible to improve the overall device production yield. In other words, the adverse production yield effects that can often result from the organic layer formation processes, as discussed above in the related art portion of this application, will not impact the production yield of the thin film transistors.

[0064] It will be apparent to those skilled in the art that various modifications and variations can be made in the organic electroluminescent device and fabricating method thereof of the present invention without departing from the spirit or scope of the invention. Thus, it is intended that the present invention cover the modifications and variations of this invention provided they come within the scope of the appended claims and their equivalents.

What is claimed is:

1. An organic electroluminescent (EL) display device, comprising:

a first array substrate having an anode electrode, a cathode electrode and an organic layer between the anode electrode and the cathode electrode;

a second array substrate having at least one driving thin film transistor formed thereon, the at least one driving thin film transistor to supply a driving signal to either one of the anode electrode and the cathode electrode;

a first spacer made of conductive material to supply the driving signal to either one of the anode electrode and the cathode electrode, the first spacer being formed between the first and the second array substrates; and

a second spacer made of an adhesive material to fix together the first and the second array substrates, the second spacer being formed between the first and the second array substrates.

2. The EL display device of claim 1, wherein the first spacer supplies the driving signal to the anode electrode.

3. The EL display device of claim 1, wherein the second spacer is about 3-5 micrometers in height.

4. The EL display device of claim 1, further comprising a sealing member for combining the first array substrate and the second array substrate using a sealant.

5. The EL display device of claim 4, wherein the second spacer is made of a material identical to the material making up the sealing member.

6. The EL display device of claim 1, wherein the second array substrate comprises:

- a gate line;
- a data line crossing the gate line;
- a supply line formed in parallel with the data line;
- a first thin film transistor located at an intersection of the gate line and the data line; and
- a second thin film transistor connected to the supply line and the first thin film transistor.

7. The EL display device of claim 6, wherein the second spacer overlaps with any one of the gate line, the data line, the supply line, the first thin film transistor and the second thin film transistor.

8. The EL display device of claim 6, wherein the second spacer contacts the anode electrode.

9. The EL display device of claim 6, wherein the first spacer is connected to the drain electrode of the second thin film transistor.

10. A method of fabricating an organic electroluminescent (EL) display device, comprising:

- forming a first array substrate including an anode electrode, a cathode electrode and an organic layer between the anode electrode and the cathode electrode;
- forming a second array substrate including at least one driving thin film transistor formed thereon to supply a driving signal to either one of the anode electrode and the cathode electrode;
- forming a first spacer of conductive material between the first and the second array substrates to supply the driving signal to either one of the anode electrode and the cathode electrode; and

forming a second spacer of an adhesive material between the first and the second array substrates to fix together the first and second array substrates.

11. The method of claim 10, further comprising combining the first array substrate and the second array substrate using a sealant.

12. The method of claim 11, wherein the second spacer is formed of a material identical to the material from which the sealant is formed.

13. The method of claim 10, wherein forming the second array substrate comprises:

- forming a gate line;

- forming a data line crossing the gate line;

- forming a supply line in parallel with the data line;

- forming a first thin film transistor at an intersection of the gate line and the data line; and

- forming a second thin film transistor connected to the supply line and the first thin film transistor.

14. The method of claim 13, wherein the second spacer is formed to overlap with any one of the gate line, the data line, the supply line, the first thin film transistor, and the second thin film transistor.

15. The method of claim 11, wherein the second spacer is formed to contact with the anode electrode.

16. An organic electroluminescent (EL) display device, comprising:

- a first array substrate having an anode electrode, a cathode electrode and an organic layer between the anode electrode and the cathode electrode;

- a second array substrate having at least one driving thin film transistor formed thereon, the at least one driving thin film transistor to supply a driving signal to either one of the anode electrode and the cathode electrode via a conductor; and

- a spacer made of an electrically insulating material to fix together the first and the second array substrates, the spacer being formed between the first and the second array substrates.

17. The EL display device of claim 16, wherein the spacer is about 3-5 micrometers in height.

18. The EL display device of claim 16, further comprising a sealing member for combining the first array substrate and the second array substrate using a sealant.

19. The EL display device of claim 18, wherein the spacer is made of a material identical to the material making up the sealing member.

20. The EL display device of claim 16, wherein the spacer contacts the anode electrode.

21. The EL display device of claim 16, wherein the spacer is made of an adhesive material.

* * * * *

专利名称(译)	有机电致发光显示装置及其制造方法		
公开(公告)号	US20050140281A1	公开(公告)日	2005-06-30
申请号	US10/825247	申请日	2004-04-16
[标]申请(专利权)人(译)	乐金显示有限公司		
申请(专利权)人(译)	LG.PHILIPS LCD CO. , LTD.		
当前申请(专利权)人(译)	LG DISPLAY CO. , LTD.		
[标]发明人	PARK JAE YONG		
发明人	PARK, JAE-YONG		
IPC分类号	H01L51/50 G09F9/00 G09F9/30 G09G3/32 H01L21/00 H01L27/32 H05B33/00 H05B33/04 H05B33/08 H05B33/10 H05B33/12 H05B33/14 H05B33/22		
CPC分类号	G09G3/3208 H01L27/3246 H01L51/525 H01L27/3253		
优先权	1020030099241 2003-12-29 KR		
其他公开文献	US7221091		
外部链接	Espacenet USPTO		

摘要(译)

有机电致发光 (EL) 显示装置及其制造方法包括第一阵列基板, 该第一阵列基板具有阳极, 阴极和在阳极和阴极之间的有机层;第二阵列基板, 其上形成有至少一个驱动薄膜晶体管, 所述至少一个驱动薄膜晶体管向所述阳极和所述阴极中的任一个提供驱动信号;第一间隔物由导电材料制成, 以将驱动信号提供给阳极电极和阴极电极中的任一个, 第一间隔物形成在第一和第二阵列基板之间;第二间隔物由粘合材料制成, 以将第一和第二阵列基板固定在一起, 第二间隔物形成在第一和第二阵列基板之间。

